

\$895,000 - On Twp Rd 491a, Rural Brazeau County

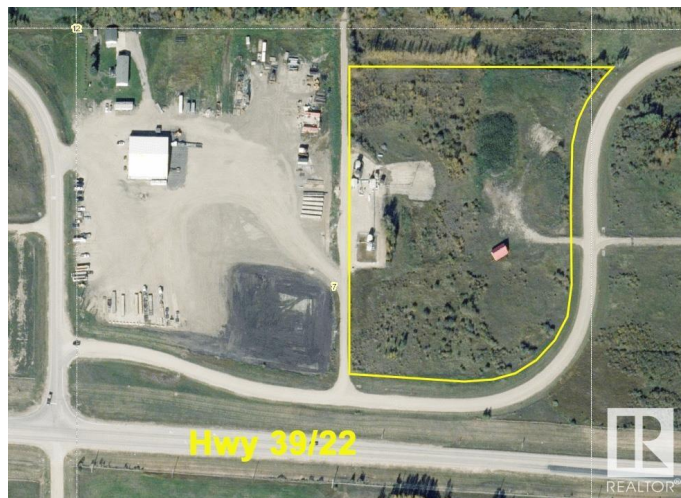
MLS® #E4391013

\$895,000

0 Bedroom, 0.00 Bathroom,
Land Commercial on 0.00 Acres

None, Rural Brazeau County, AB

Awaiting your development - 10 acre parcel
zoned Rural Industrial minutes east of Drayton
Valley with great access to Hwy39/22. Options
are endless with just over an hour to
Edmonton it could be a great area to expand
your business. Cabin is not owned by seller
and therefore is NOT included.



Essential Information

MLS® #	E4391013
Price	\$895,000
Bathrooms	0.00
Acres	0.00
Type	Land Commercial
Status	Active

Community Information

Address	On Twp Rd 491a
Area	Rural Brazeau County
Subdivision	None
City	Rural Brazeau County
County	ALBERTA
Province	AB
Postal Code	T0C 0S0

Additional Information

Date Listed	June 4th, 2024
-------------	----------------

Days on Market 339

Zoning Zone 90

DATA IS DEEMED RELIABLE BUT IS NOT GUARANTEED ACCURATE BY THE REALTORS® ASSOCIATION OF EDMONTON. COPYRIGHT 2025 BY THE REALTORS® ASSOCIATION OF EDMONTON. ALL RIGHTS RESERVED. Trademarks are owned or controlled by the Canadian Real Estate Association (CREA) and identify real estate professionals who are members of CREA (REALTOR®, REALTORS®) and/or the quality of services they provide (MLS®, Multiple Listing Service®)

Listing information last updated on May 8th, 2025 at 10:32pm MDT