

# \$99,000 - 103 1 Junction Drive, Penhold

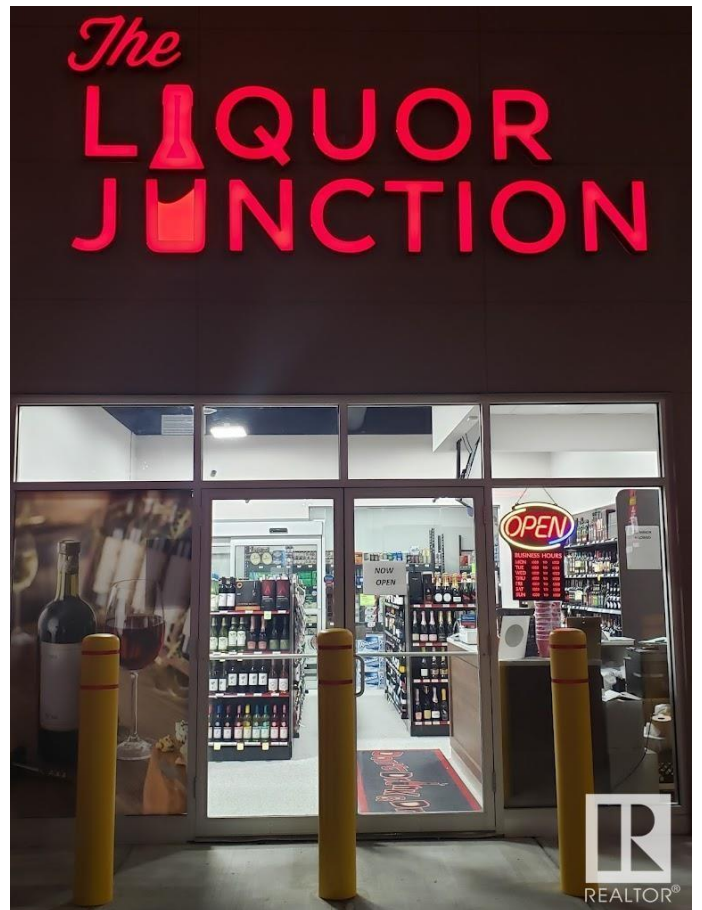
MLS® #E4417482

**\$99,000**

0 Bedroom, 0.00 Bathroom,  
Business on 0.00 Acres

None, Penhold, AB

Established liquor store, built brand new in 2020, for sale in rapidly growing Central Alberta! Located in a busy plaza along with other big franchises including Tim Hortons, Burger King, Petro Canada Gas station/truck stop, Pizza Pizza etc. bringing in a lot of foot traffic. This sale includes business only, no real property.



## Essential Information

|           |          |
|-----------|----------|
| MLS® #    | E4417482 |
| Price     | \$99,000 |
| Bathrooms | 0.00     |
| Acres     | 0.00     |
| Type      | Business |
| Status    | Active   |

## Community Information

|             |                      |
|-------------|----------------------|
| Address     | 103 1 Junction Drive |
| Area        | Penhold              |
| Subdivision | None                 |
| City        | Penhold              |
| County      | ALBERTA              |
| Province    | AB                   |
| Postal Code | T0M 1R0              |

## Additional Information

|             |                   |
|-------------|-------------------|
| Date Listed | January 9th, 2025 |
|-------------|-------------------|

|                |         |
|----------------|---------|
| Days on Market | 89      |
| Zoning         | Zone 90 |

DATA IS DEEMED RELIABLE BUT IS NOT GUARANTEED ACCURATE BY THE REALTORS® ASSOCIATION OF EDMONTON. COPYRIGHT 2025 BY THE REALTORS® ASSOCIATION OF EDMONTON. ALL RIGHTS RESERVED. Trademarks are owned or controlled by the Canadian Real Estate Association (CREA) and identify real estate professionals who are members of CREA (REALTOR®, REALTORS®) and/or the quality of services they provide (MLS®, Multiple Listing Service®)

Listing information last updated on April 8th, 2025 at 10:47am MDT