

\$157,500 - 4622 55 Avenue, Wetaskiwin

MLS® #E4423161

\$157,500

0 Bedroom, 0.00 Bathroom,
Land Commercial on 0.00 Acres

Recside, Wetaskiwin, AB

130' x 60' vacant lot in Wetaskiwin! Can build a single family home OR up to a 4plex with 4 legal basement suites. Preliminary plans for a 6plex available. Comes with topographic survey.



Essential Information

MLS® #	E4423161
Price	\$157,500
Bathrooms	0.00
Acres	0.00
Type	Land Commercial
Status	Active

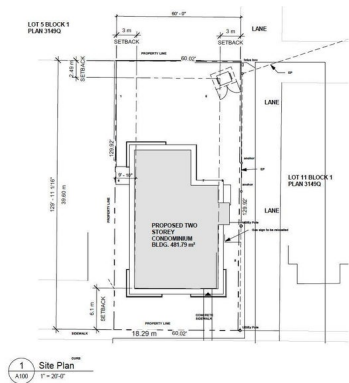


Community Information

Address	4622 55 Avenue
Area	Wetaskiwin
Subdivision	Recside
City	Wetaskiwin
County	ALBERTA
Province	AB
Postal Code	T9A 1A2

Additional Information

Date Listed	February 27th, 2025
Days on Market	71
Zoning	Zone 80



Area Schedule (Gross Building)				
Unit	Name	Level	Area	Area m ²
101	TWO BEDROOM UNIT	MAIN FLOOR	961 SF	89.30 m ²
102	ONE BEDROOM UNIT	MAIN FLOOR	650 SF	60.37 m ²
103	ONE BEDROOM UNIT	MAIN FLOOR	650 SF	60.37 m ²
201	TWO BEDROOM UNIT	2ND FLOOR	1,200 SF	111.48 m ²
202	ONE BEDROOM UNIT	2ND FLOOR	650 SF	60.37 m ²
203	ONE BEDROOM UNIT	2ND FLOOR	650 SF	60.37 m ²
			4,561 SF	422.59 m ²

CONCEPT DRAWING - (N) (T)
FOR CONSTRUCTION (N)

DATA IS DEEMED RELIABLE BUT IS NOT GUARANTEED ACCURATE BY THE REALTORS® ASSOCIATION OF EDMONTON. COPYRIGHT 2025 BY THE REALTORS® ASSOCIATION OF EDMONTON. ALL RIGHTS RESERVED.Trademarks are owned or controlled by the Canadian Real Estate Association (CREA) and identify real estate professionals who are members of CREA (REALTOR®, REALTORS®) and/or the quality of services they provide (MLS®, Multiple Listing Service®)

Listing information last updated on May 9th, 2025 at 8:17am MDT