

\$2,499,000 - Reserve Lot, Wetaskiwin

MLS® #E4430540

\$2,499,000

0 Bedroom, 0.00 Bathroom,
Land Commercial on 0.00 Acres

Aspen Ridge (Wetaskiwin), Wetaskiwin, AB

ATTENTION Developers! The opportunity for prime development property has become available! Just over 68 acres of land located within the Aspen Ridge AREA Structure plan is now available. All services at property line. Located in a prime area of the City of Wetaskiwin, ready for new lots to be created now! Priced to sell!

Essential Information

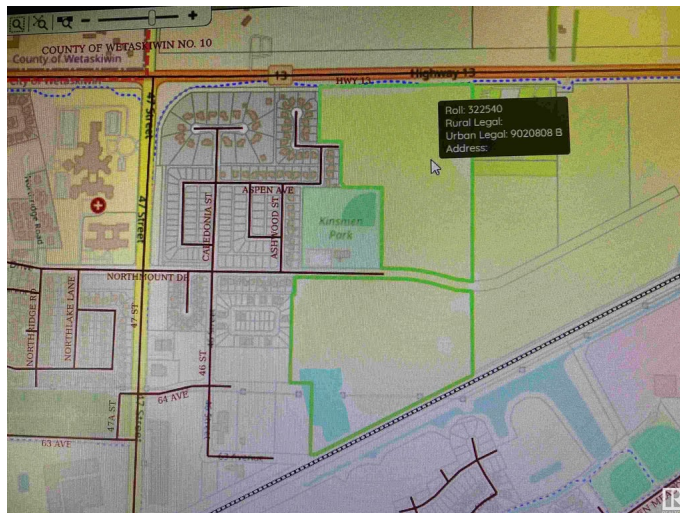
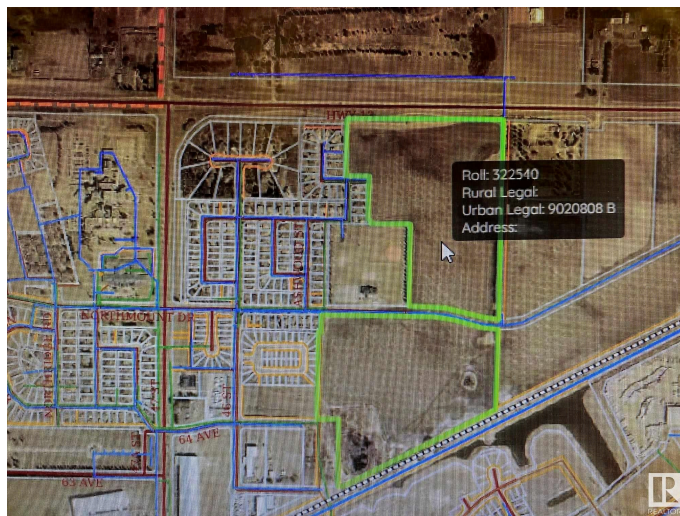
MLS® #	E4430540
Price	\$2,499,000
Bathrooms	0.00
Acres	0.00
Type	Land Commercial
Status	Active

Community Information

Address	Reserve Lot
Area	Wetaskiwin
Subdivision	Aspen Ridge (Wetaskiwin)
City	Wetaskiwin
County	ALBERTA
Province	AB
Postal Code	T9A 1X1

Additional Information

Date Listed	April 11th, 2025
-------------	------------------



Days on Market 4

Zoning Zone 80

DATA IS DEEMED RELIABLE BUT IS NOT GUARANTEED ACCURATE BY THE REALTORS® ASSOCIATION OF EDMONTON. COPYRIGHT 2025 BY THE REALTORS® ASSOCIATION OF EDMONTON. ALL RIGHTS RESERVED. Trademarks are owned or controlled by the Canadian Real Estate Association (CREA) and identify real estate professionals who are members of CREA (REALTOR®, REALTORS®) and/or the quality of services they provide (MLS®, Multiple Listing Service®)

Listing information last updated on April 15th, 2025 at 8:47am MDT