

\$499,000 - 3510 Weidle Way, Edmonton

MLS® #E4431791

\$499,000

3 Bedroom, 2.50 Bathroom, 1,656 sqft

Single Family on 0.00 Acres

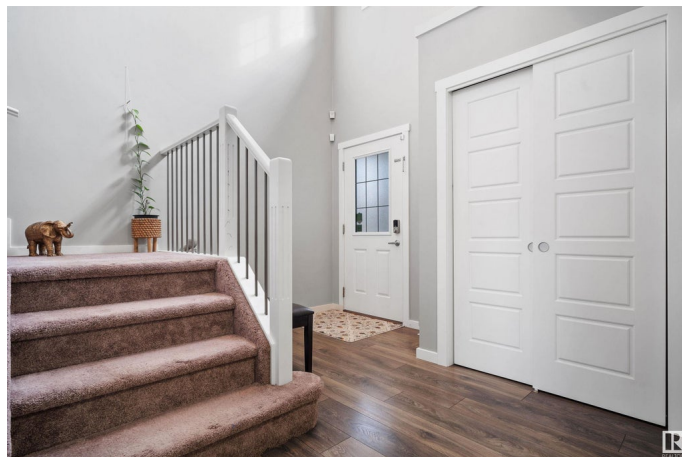
Walker, Edmonton, AB

Welcome to this stunning 1,655 sq ft duplex situated on a PIE-SHAPED lot in the family-friendly community of Walker. The home welcomes you with a grand open-to-below entryway that creates an immediate sense of space and elegance. The kitchen is beautifully designed with a centre island, walk-in pantry, and plenty of cabinet space. Adjacent to the kitchen, the dining area that is flooded with natural light. The living room offers a cozy yet spacious atmosphere, ideal for relaxing or hosting guests. A MAIN FLOOR DEN provides the perfect space for a home office or study area, while the laundry room and a convenient half bath complete the main level. Upstairs, the primary bedroom is a true retreat with a walk-in closet and a private ensuite. Two additional bedrooms are well-sized and share a full bathroom, making it perfect for a growing family. Outside, the fully landscaped and fenced backyard features a large deck and an impressively spacious yard.

Built in 2016

Essential Information

| | |
|-----------|-----------|
| MLS® # | E4431791 |
| Price | \$499,000 |
| Bedrooms | 3 |
| Bathrooms | 2.50 |



| | |
|----------------|---------------|
| Full Baths | 2 |
| Half Baths | 1 |
| Square Footage | 1,656 |
| Acres | 0.00 |
| Year Built | 2016 |
| Type | Single Family |
| Sub-Type | Half Duplex |
| Style | 2 Storey |
| Status | Active |

Community Information

| | |
|-------------|-----------------|
| Address | 3510 Weidle Way |
| Area | Edmonton |
| Subdivision | Walker |
| City | Edmonton |
| County | ALBERTA |
| Province | AB |
| Postal Code | T6X 1Z4 |

Amenities

| | |
|-----------|------------------------|
| Amenities | Deck, See Remarks |
| Parking | Double Garage Attached |

Interior

| | |
|-------------------|--|
| Interior Features | ensuite bathroom |
| Appliances | Air Conditioning-Central, Dishwasher-Built-In, Dryer, Garage Control, Garage Opener, Microwave Hood Fan, Refrigerator, Stove-Electric, Washer, Curtains and Blinds |
| Heating | Forced Air-1, Natural Gas |
| Stories | 2 |
| Has Basement | Yes |
| Basement | Full, Unfinished |

Exterior

| | |
|-------------------|--|
| Exterior | Wood, Vinyl |
| Exterior Features | Fenced, Landscaped, Playground Nearby, Public Transportation, Schools, Shopping Nearby |
| Roof | Asphalt Shingles |
| Construction | Wood, Vinyl |

Foundation Concrete Perimeter

Additional Information

Date Listed April 18th, 2025
Days on Market 56
Zoning Zone 53
HOA Fees 283.61
HOA Fees Freq. Annually

DATA IS DEEMED RELIABLE BUT IS NOT GUARANTEED ACCURATE BY THE REALTORS® ASSOCIATION OF EDMONTON. COPYRIGHT 2025 BY THE REALTORS® ASSOCIATION OF EDMONTON. ALL RIGHTS RESERVED.Trademarks are owned or controlled by the Canadian Real Estate Association (CREA) and identify real estate professionals who are members of CREA (REALTOR®, REALTORS®) and/or the quality of services they provide (MLS®, Multiple Listing Service®)
Listing information last updated on June 13th, 2025 at 4:02pm MDT