

## **\$585,000 - 8 Everwood Close, St. Albert**

---

MLS® #E4435864

**\$585,000**

5 Bedroom, 3.50 Bathroom, 1,747 sqft

Single Family on 0.00 Acres

Erin Ridge, St. Albert, AB

Rare 5-bedroom, 2-storey home on a quiet Erin Ridge cul-de-sac—perfect for a large or growing family. Recently updated with a new roof and vinyl plank flooring upstairs (no carpet). The main floor features large windows, an open-concept living area with a gas fireplace, and a bright kitchen with an island, granite countertops, stainless steel appliances, and a large pantry. Garden doors open to a large backyard with a huge, freshly painted deck—perfect for outdoor living. A 2-piece bath and laundry room complete this level. Upstairs offers 4 spacious bedrooms, a 3-piece bath, and a primary suite with a 4-piece ensuite and walk-in closet. The finished basement includes a fifth bedroom, large rec room, 3-piece bath, mechanical and utility rooms, plus storage. Close to trails, schools, and amenities, this move-in-ready home has it all.

Built in 2003

### **Essential Information**

MLS® #	E4435864
Price	\$585,000
Bedrooms	5
Bathrooms	3.50
Full Baths	3
Half Baths	1



Square Footage	1,747
Acres	0.00
Year Built	2003
Type	Single Family
Sub-Type	Detached Single Family
Style	2 Storey
Status	Active

### Community Information

Address	8 Everwood Close
Area	St. Albert
Subdivision	Erin Ridge
City	St. Albert
County	ALBERTA
Province	AB
Postal Code	T8N 7H1

### Amenities

Amenities	Deck, Wet Bar
Parking	Double Garage Attached

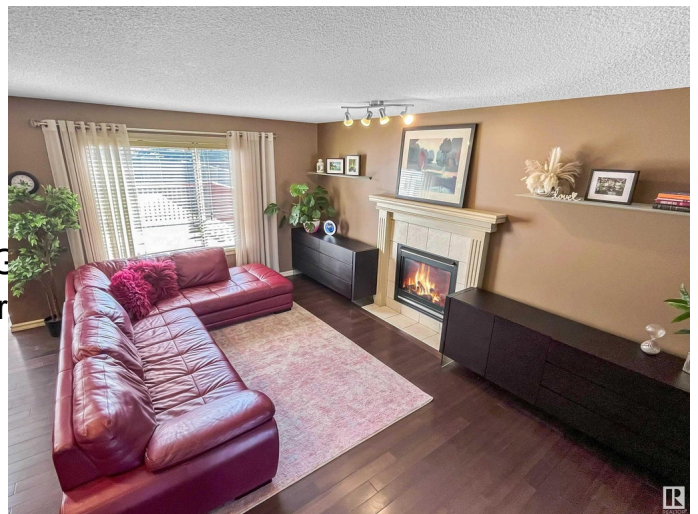
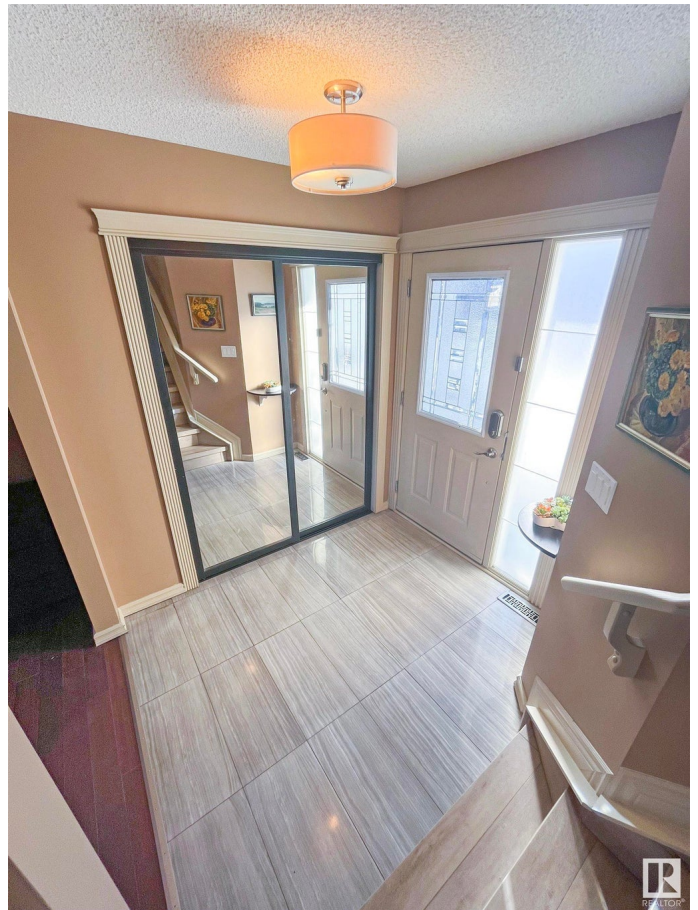
### Interior

Interior Features	ensuite bathroom
Appliances	Dishwasher-Built-In, Dryer, C Hood Fan, Refrigerator, Stor Coverings
Heating	Forced Air-1, Natural Gas
Stories	3
Has Basement	Yes
Basement	Full, Finished

### Exterior

Exterior	Wood, Vinyl
Exterior Features	Fenced, Flat Site
Roof	Asphalt Shingles
Construction	Wood, Vinyl
Foundation	Concrete Perimeter

### Additional Information



Date Listed	May 11th, 2025
Days on Market	9
Zoning	Zone 24

DATA IS DEEMED RELIABLE BUT IS NOT GUARANTEED ACCURATE BY THE REALTORS® ASSOCIATION OF EDMONTON. COPYRIGHT 2025 BY THE REALTORS® ASSOCIATION OF EDMONTON. ALL RIGHTS RESERVED. Trademarks are owned or controlled by the Canadian Real Estate Association (CREA) and identify real estate professionals who are members of CREA (REALTOR®, REALTORS®) and/or the quality of services they provide (MLS®, Multiple Listing Service®)

Listing information last updated on May 19th, 2025 at 11:17pm MDT