

\$799,000 - 8709 102 Avenue, Edmonton

MLS® #E4436333

\$799,000

4 Bedroom, 3.50 Bathroom, 3,596 sqft

Single Family on 0.00 Acres

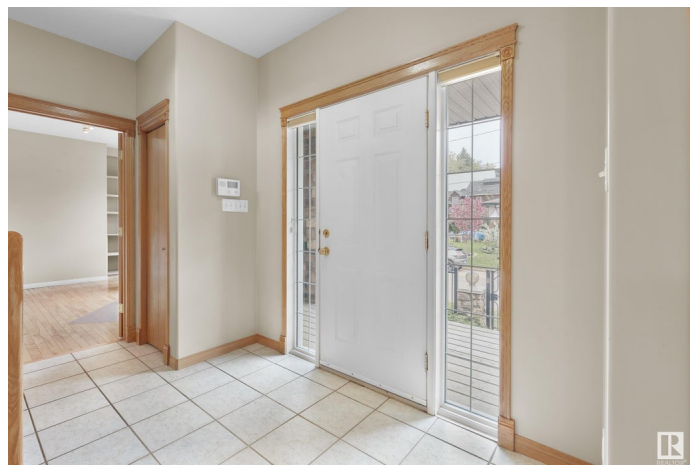
Riverdale, Edmonton, AB

Riverdale â€” the perfect family community â€” small town feel in the heart of Yeg! Welcome to this beautifully built Perry Homes build, nestled in the highly sought-after Riverdale community. Built in 2000, this well-maintained home offers stunning River Valley views & an unbeatable location â€” 4 bedrooms (3 beds up & 1 down), 3.5 bathrooms, 2 Kitchens, Separate Entrance to the basement, movie room, west facing sun room, double attached garage & more. Inside, this spacious home allows for flexible living - perfect for families & working from home. As you walkthrough the home you will love the natural light & views out of every window. The fully finished basement features a second full kitchenâ€”ideal for extended family or guests. Enjoy the convenience of a rear-attached double garage and the charm of a fully fenced yard with great curb appeal. Just minutes to downtown, golf, cafes, charming local shops, schools & walking trails.

Built in 2000

Essential Information

MLS® #	E4436333
Price	\$799,000
Bedrooms	4
Bathrooms	3.50



Full Baths	3
Half Baths	1
Square Footage	3,596
Acres	0.00
Year Built	2000
Type	Single Family
Sub-Type	Detached Single Family
Style	2 Storey
Status	Active

Community Information

Address	8709 102 Avenue
Area	Edmonton
Subdivision	Riverdale
City	Edmonton
County	ALBERTA
Province	AB
Postal Code	T5H 0C9

Amenities

Amenities	Air Conditioner, Detectors Smoke, Vaulted Ceiling, Vinyl Windows, Infill Property
Parking Spaces	4
Parking	Double Garage Attached, Heated, Insulated

Interior

Interior Features	ensuite bathroom
Appliances	Air Conditioning-Central, Dishwasher-Built-In, Dryer, Garage Control, Garage Opener, Refrigerator, Stove-Electric, Washer
Heating	Forced Air-2, Natural Gas
Fireplace	Yes
Fireplaces	Mantel
Stories	3
Has Basement	Yes
Basement	Full, Finished

Exterior

Exterior	Wood, Stone, Vinyl
Exterior Features	Back Lane, Corner Lot, Fenced, Flat Site, Landscaped, Park/Reserve,

Playground Nearby, Public Transportation, Ravine View, River View, Schools, Shopping Nearby, Treed Lot

Roof	Metal
Construction	Wood, Stone, Vinyl
Foundation	Concrete Perimeter

School Information

Elementary	Riverdale School
Middle	Spruce Avenue School
High	Victoria School

Additional Information

Date Listed	May 14th, 2025
Days on Market	8
Zoning	Zone 13

DATA IS DEEMED RELIABLE BUT IS NOT GUARANTEED ACCURATE BY THE REALTORS® ASSOCIATION OF EDMONTON. COPYRIGHT 2025 BY THE REALTORS® ASSOCIATION OF EDMONTON. ALL RIGHTS RESERVED.Trademarks are owned or controlled by the Canadian Real Estate Association (CREA) and identify real estate professionals who are members of CREA (REALTOR®, REALTORS®) and/or the quality of services they provide (MLS®, Multiple Listing Service®)

Listing information last updated on May 22nd, 2025 at 6:02pm MDT