

\$539,900 - 13 Bellevue Crescent, St. Albert

MLS® #E4436585

\$539,900

3 Bedroom, 3.00 Bathroom, 1,635 sqft

Single Family on 0.00 Acres

Braeside, St. Albert, AB

Impeccably maintained home nestled on a quiet, tree-lined street in desirable Braeside, backing directly onto the ravine. Located in a peaceful, family-friendly neighborhood, this bright & inviting home boasts abundant natural light & a Southwest-facing backyard oasis. The main level features a spacious entry with warm hardwood floors, a bright living room, & a kitchen with stainless steel appliances & a gas stove. Adjacent is a cozy dining nook & a sunlit family room with a wood-burning fireplace, plus a third bedroom with a private 4pc ensuite. Upstairs are two generously sized bedrooms & two full bathrooms—one with an ensuite, & the other with access to a private second-floor deck overlooking the ravine. The fully finished basement includes a large rec room, laundry, ample storage, & potential for a fourth bedroom. Enjoy the private backyard with a brick patio, gas BBQ hookup, & wood deck. The oversized heated double garage is ideal for a workshop. Updates: HWT 2022, shingles & furnace (2024).

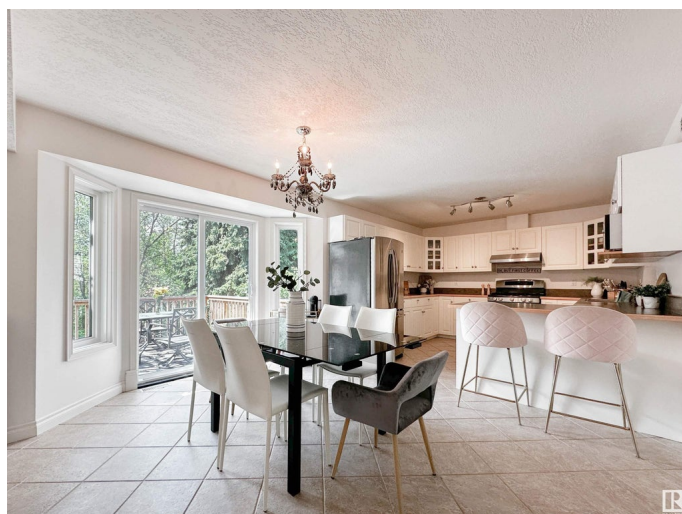
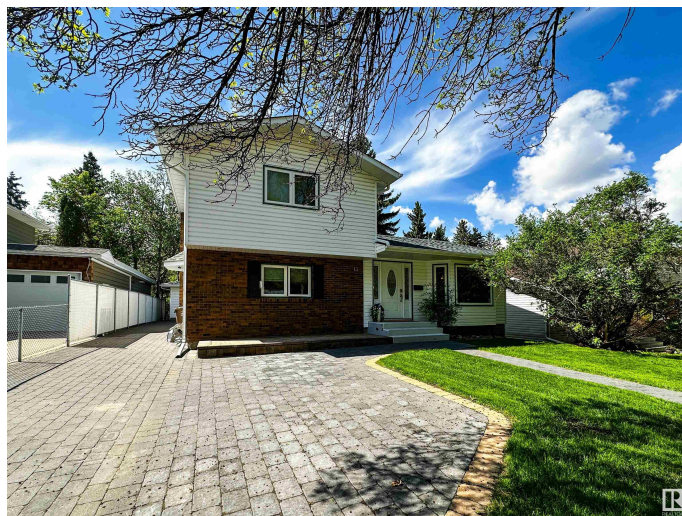
Built in 1969

Essential Information

MLS® # E4436585

Price \$539,900

Bedrooms 3



| | |
|----------------|------------------------|
| Bathrooms | 3.00 |
| Full Baths | 3 |
| Square Footage | 1,635 |
| Acres | 0.00 |
| Year Built | 1969 |
| Type | Single Family |
| Sub-Type | Detached Single Family |
| Style | 2 Storey |
| Status | Active |

Community Information

| | |
|-------------|----------------------|
| Address | 13 Bellevue Crescent |
| Area | St. Albert |
| Subdivision | Braeside |
| City | St. Albert |
| County | ALBERTA |
| Province | AB |
| Postal Code | T8N 0A5 |

Amenities

| | |
|-----------|--|
| Amenities | Air Conditioner, Deck, Exterior Walls- 2"x6", Patio, See Remarks, Vacuum System-Roughed-In |
| Parking | Double Garage Detached, Heated, Over Sized |

Interior

| | |
|-------------------|--|
| Interior Features | ensuite bathroom |
| Appliances | Air Conditioning-Central, Dishwasher-Built-In, Dryer, Fan-Ceiling, Garage Control, Garage Opener, Hood Fan, Refrigerator, Storage Shed, Stove-Gas, Vacuum System Attachments, Vacuum Systems, Window Coverings, TV Wall Mount, Garage Heater |
| Heating | Forced Air-1, Natural Gas |
| Fireplace | Yes |
| Fireplaces | Mantel |
| Stories | 2 |
| Has Basement | Yes |
| Basement | Full, Finished |

Exterior

| | |
|----------|--------------------|
| Exterior | Wood, Brick, Vinyl |
|----------|--------------------|

| | |
|-------------------|---|
| Exterior Features | Backs Onto Park/Trees, Fenced, Landscaped, Playground Nearby, Public Transportation, Schools, Shopping Nearby, Treed Lot, See Remarks |
| Roof | Asphalt Shingles |
| Construction | Wood, Brick, Vinyl |
| Foundation | Concrete Perimeter |

Additional Information

| | |
|----------------|----------------|
| Date Listed | May 15th, 2025 |
| Days on Market | 8 |
| Zoning | Zone 24 |

DATA IS DEEMED RELIABLE BUT IS NOT GUARANTEED ACCURATE BY THE REALTORS® ASSOCIATION OF EDMONTON. COPYRIGHT 2025 BY THE REALTORS® ASSOCIATION OF EDMONTON. ALL RIGHTS RESERVED.Trademarks are owned or controlled by the Canadian Real Estate Association (CREA) and identify real estate professionals who are members of CREA (REALTOR®, REALTORS®) and/or the quality of services they provide (MLS®, Multiple Listing Service®)

Listing information last updated on May 23rd, 2025 at 1:17am MDT