

\$649,900 - 14311 58 Avenue, Edmonton

MLS® #E4436804

\$649,900

5 Bedroom, 3.50 Bathroom, 1,772 sqft

Single Family on 0.00 Acres

Brookside, Edmonton, AB

PIE LOT IN BROOKSIDE, LOVELY FAMILY HOME! Welcome to this well-maintained 5 bedroom, 3.5 bath, 1,772 sqft two-storey on a huge pie-shaped lot in sought-after Brookside in Riverbend. The main floor features a bright living room with bay window, an opened-up kitchen with granite counters and ample storage, and a sunken family room with gas fireplace. A formal dining area, main floor bedroom/office, and 2-piece guest bath complete the level. Upstairs is the primary suite with 3-piece ensuite, two additional bedrooms, and a full bath. The finished basement includes a large family room, 5th bedroom, den, 3-piece bath, and excellent storage with a workshop, laundry, utility room, and cold room. The private, fenced south yard features mature trees, a deck, and a double detached garage. Just a 5-minute walk to Brookside School and close to Whitemud Drive and River Valley Trails, this home offers space, comfort, and location. A great home in a great neighbourhood. Welcome home!

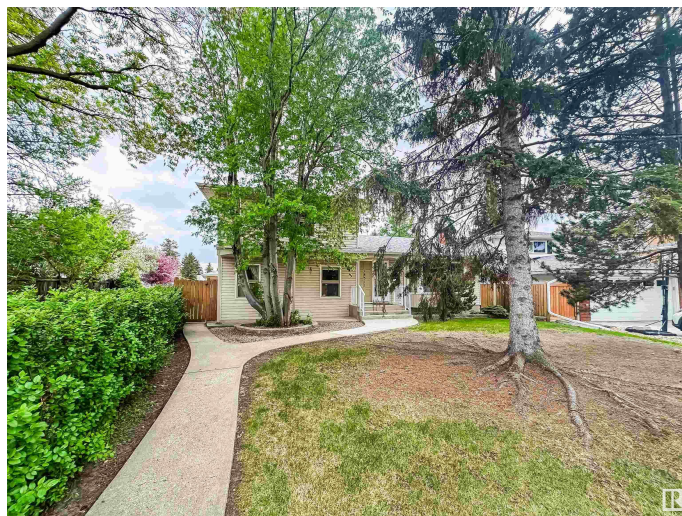
Built in 1969

Essential Information

MLS® # E4436804

Price \$649,900

Bedrooms 5



Bathrooms	3.50
Full Baths	3
Half Baths	1
Square Footage	1,772
Acres	0.00
Year Built	1969
Type	Single Family
Sub-Type	Detached Single Family
Style	2 Storey
Status	Active

Community Information

Address	14311 58 Avenue
Area	Edmonton
Subdivision	Brookside
City	Edmonton
County	ALBERTA
Province	AB
Postal Code	T6H 1C9

Amenities

Amenities	Off Street Parking, Deck
Parking Spaces	4
Parking	Double Garage Detached

Interior

Interior Features	ensuite bathroom
Appliances	Dishwasher-Built-In, Dryer, Garage Control, Garage Opener, Hood Fan, Oven-Built-In, Refrigerator, Stove-Countertop Electric, Washer, Window Coverings
Heating	Forced Air-2, Natural Gas
Fireplace	Yes
Fireplaces	Brick Facing
Stories	3
Has Basement	Yes
Basement	Full, Finished

Exterior

Exterior	Wood, Vinyl
----------	-------------

Exterior Features	Back Lane, Fenced, Landscaped, Playground Nearby, Schools, Shopping Nearby
Roof	Asphalt Shingles
Construction	Wood, Vinyl
Foundation	Concrete Perimeter

School Information

Elementary	Brookside School
Middle	Riverbend School
High	Lillian Osborne / Strathco

Additional Information

Date Listed	May 15th, 2025
Days on Market	2
Zoning	Zone 14

DATA IS DEEMED RELIABLE BUT IS NOT GUARANTEED ACCURATE BY THE REALTORS® ASSOCIATION OF EDMONTON. COPYRIGHT 2025 BY THE REALTORS® ASSOCIATION OF EDMONTON. ALL RIGHTS RESERVED.Trademarks are owned or controlled by the Canadian Real Estate Association (CREA) and identify real estate professionals who are members of CREA (REALTOR®, REALTORS®) and/or the quality of services they provide (MLS®, Multiple Listing Service®)

Listing information last updated on May 17th, 2025 at 2:32am MDT