

## \$499,900 - 33 Belfry Fairway Crescent, Stony Plain

MLS® #E4436927

**\$499,900**

3 Bedroom, 2.50 Bathroom, 1,854 sqft

Single Family on 0.00 Acres

The Fairways\_STPL, Stony Plain, AB

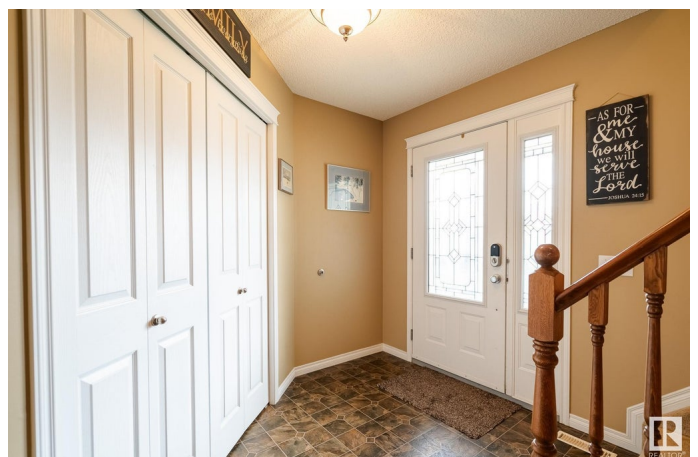
Discover this beautifully maintained home BACKING DIRECTLY ONTO THE GOLF COURSE! True pride of ownership in a highly sought-after neighbourhood. Step inside the main floor featuring gleaming hardwood and an abundance of natural light. The spacious kitchen is a chef's dream, complete with all new appliances, gas stove, a large amount of cabinetry, and center island with eating bar. Dining nook, surrounded by a wall of windows, offers picturesque views of the private, treed backyard and the peaceful fairways beyond. Step outside to a large deck, perfect for morning coffee or evening gatherings. The cozy living room centers around a warm gas fireplace perfect to relax and entertain. Upstairs, enjoy a large bonus room with soaring vaulted ceilings. All 3 bedrooms are generously sized, while the primary suite offers a private retreat with a four-piece ensuite featuring a jetted tub. The Heated 20' x 22' Attached Garage is perfect for a workshop. Don't miss this rare opportunity with golf course views!

Built in 2005

### Essential Information

MLS® # E4436927

Price \$499,900



Bedrooms	3
Bathrooms	2.50
Full Baths	2
Half Baths	1
Square Footage	1,854
Acres	0.00
Year Built	2005
Type	Single Family
Sub-Type	Detached Single Family
Style	2 Storey
Status	Active

### Community Information

Address	33 Belfry Fairway Crescent
Area	Stony Plain
Subdivision	The Fairways_STPL
City	Stony Plain
County	ALBERTA
Province	AB
Postal Code	T7Z 2X2

### Amenities

Amenities	Deck, No Smoking Home
Parking	Double Garage Attached

### Interior

Interior Features	ensuite bathroom
Appliances	Dishwasher-Built-In, Dryer, Microwave Hood Fan, Refrigerator, Stove-Gas, Washer, Window Coverings
Heating	Forced Air-1, Natural Gas
Stories	2
Has Basement	Yes
Basement	Full, Unfinished

### Exterior

Exterior	Wood, Brick, Vinyl
Exterior Features	Backs Onto Park/Trees, Fenced, Golf Nearby, Landscaped, Playground Nearby, Schools, Shopping Nearby
Roof	Asphalt Shingles

Construction	Wood, Brick, Vinyl
Foundation	Concrete Perimeter

**Additional Information**

Date Listed	May 16th, 2025
Days on Market	8
Zoning	Zone 91

DATA IS DEEMED RELIABLE BUT IS NOT GUARANTEED ACCURATE BY THE REALTORS® ASSOCIATION OF EDMONTON. COPYRIGHT 2025 BY THE REALTORS® ASSOCIATION OF EDMONTON. ALL RIGHTS RESERVED.Trademarks are owned or controlled by the Canadian Real Estate Association (CREA) and identify real estate professionals who are members of CREA (REALTOR®, REALTORS®) and/or the quality of services they provide (MLS®, Multiple Listing Service®)

Listing information last updated on May 24th, 2025 at 6:32am MDT