

## \$234,900 - 209 10421 42 Avenue, Edmonton

MLS® #E4437257

**\$234,900**

2 Bedroom, 2.00 Bathroom, 1,192 sqft

Condo / Townhouse on 0.00 Acres

Rideau Park (Edmonton), Edmonton, AB

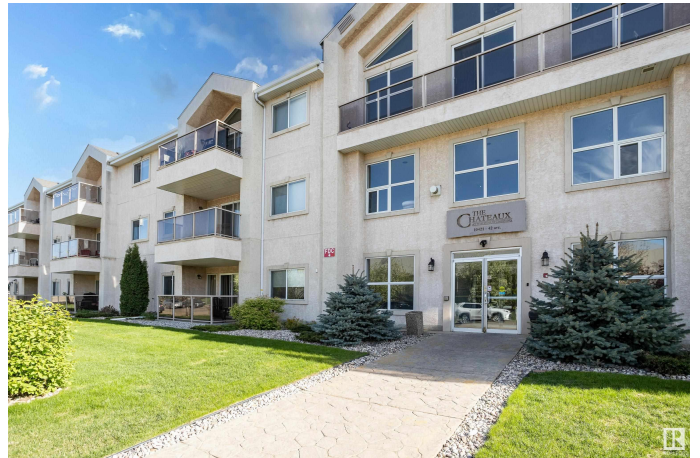
Welcome to Rideau Park's premier adult living (18+) building, where comfort meets elegance in this spacious 2-bed, 2-bath condo offering a bright, open-concept design. You'll love the chef-inspired kitchen with a large island—ideal for entertaining—and 2 generous sized bedrooms, with Primary featuring a walk-in closet. Enjoy the 2nd bedroom with Murphy Bed/desk area. The large in-suite laundry/storage room keeps everything neat and organized. Step outside to a private South facing balcony with natural gas hookup, overlooking a peaceful, tree-lined backroad. Enjoy heated underground parking with your own storage cage, plus top-tier amenities including a car wash, fitness centre, hobby room, and social lounge with pool table. Just minutes from the Edmonton Public Library, Southgate Mall, dining, transit, and Whitemud Drive, this location is unbeatable. Pet-friendly (with board approval) and ready for quick possession. Refined living at an exceptional value—ideal for down-sizers, professionals, or couples.

Built in 1997

### Essential Information

MLS® # E4437257

Price \$234,900



Bedrooms	2
Bathrooms	2.00
Full Baths	2
Square Footage	1,192
Acres	0.00
Year Built	1997
Type	Condo / Townhouse
Sub-Type	Lowrise Apartment
Style	Single Level Apartment
Status	Active

### Community Information

Address	209 10421 42 Avenue
Area	Edmonton
Subdivision	Rideau Park (Edmonton)
City	Edmonton
County	ALBERTA
Province	AB
Postal Code	T6J 7C8

### Amenities

Amenities	On Street Parking, Air Conditioner, Car Wash, Closet Organizers, Deck, Exercise Room, Secured Parking, Security Door, Social Rooms, Storage-Locker Room, See Remarks
Parking Spaces	1
Parking	Heated, Stall, Underground

### Interior

Interior Features	ensuite bathroom
Appliances	Dishwasher-Built-In, Dryer, Microwave Hood Fan, Refrigerator, Stove-Electric, Washer, Window Coverings, See Remarks
Heating	In Floor Heat System, Natural Gas
# of Stories	3
Stories	1
Has Basement	Yes
Basement	None, No Basement

### Exterior

Exterior	Wood, Stucco
----------	--------------

Exterior Features	Public Transportation, Schools, Shopping Nearby, See Remarks
Roof	Asphalt Shingles
Construction	Wood, Stucco
Foundation	Concrete Perimeter

**Additional Information**

Date Listed	May 17th, 2025
Days on Market	6
Zoning	Zone 16
Condo Fee	\$617

DATA IS DEEMED RELIABLE BUT IS NOT GUARANTEED ACCURATE BY THE REALTORS® ASSOCIATION OF EDMONTON. COPYRIGHT 2025 BY THE REALTORS® ASSOCIATION OF EDMONTON. ALL RIGHTS RESERVED.Trademarks are owned or controlled by the Canadian Real Estate Association (CREA) and identify real estate professionals who are members of CREA (REALTOR®, REALTORS®) and/or the quality of services they provide (MLS®, Multiple Listing Service®)

Listing information last updated on May 22nd, 2025 at 9:32pm MDT