

\$105,000 - 306 59422 Hwy 44, Rural Westlock County

MLS® #E4437456

\$105,000

0 Bedroom, 0.00 Bathroom,
Land Commercial on 0.00 Acres

None, Rural Westlock County, AB

3.11 acre bare land parcel. Industrial zoning allows for a wide variety of potential development. Municipal services to the ditch (TBC). Located in the Westlock industrial area with quick access from Highway 44.

Essential Information

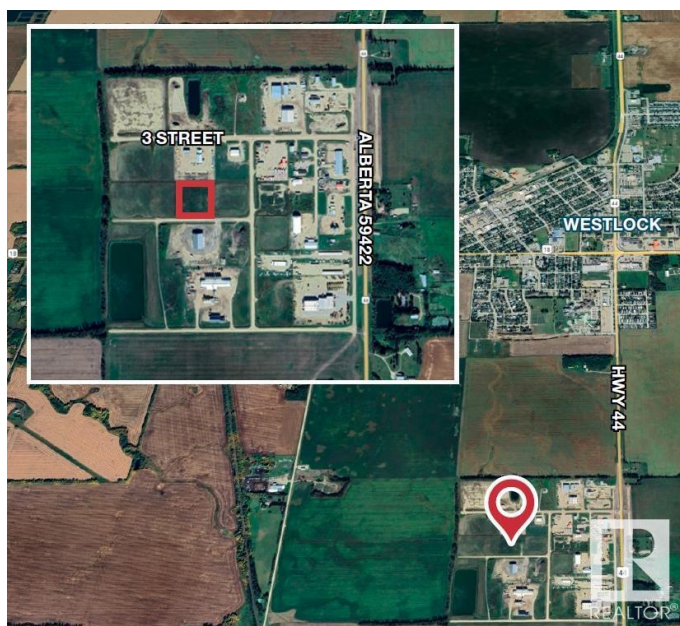
MLS® #	E4437456
Price	\$105,000
Bathrooms	0.00
Acres	0.00
Type	Land Commercial
Status	Active

Community Information

Address	306 59422 Hwy 44
Area	Rural Westlock County
Subdivision	None
City	Rural Westlock County
County	ALBERTA
Province	AB
Postal Code	T7P 1M7

Additional Information

Date Listed	May 20th, 2025
Days on Market	14
Zoning	Zone 70



DATA IS DEEMED RELIABLE BUT IS NOT GUARANTEED ACCURATE BY THE REALTORS® ASSOCIATION OF EDMONTON. COPYRIGHT 2025 BY THE REALTORS® ASSOCIATION OF EDMONTON. ALL RIGHTS RESERVED. Trademarks are owned or controlled by the Canadian Real Estate Association (CREA) and identify real estate professionals who are members of CREA (REALTOR®, REALTORS®) and/or the quality of services they provide (MLS®, Multiple Listing Service®)

Listing information last updated on June 2nd, 2025 at 10:17pm MDT