

\$489,900 - 1031 Westerra Drive, Stony Plain

MLS® #E4437978

\$489,900

4 Bedroom, 3.50 Bathroom, 1,758 sqft

Single Family on 0.00 Acres

Westerra, Stony Plain, AB

Welcome to a home that offers something for everyone! Located in a quiet, family-friendly cul-de-sac near parks and schools, this move-in ready home features soaring 16' ceilings and large windows in the living room that flood the space with natural light. Gas fireplace in Living Room. Recent updates include newer laminate and linoleum flooring, baseboards, trim, paint, hot water tank (2021), as well as a newer microwave/hood fan and dishwasher. The kitchen boasts a rustic barnwood-style island, stone backsplash, stainless steel appliances, and corner pantry. Upstairs you'll find three bedrooms plus a denâ€”perfect for a home office. The fully finished basement offers a large rec room, full bath, and a fourth bedroom. Enjoy your morning coffee on the north-facing deck with privacy fence and BBQ with natural gas hookup. The heated double garage with 220V power provides great storage and workspace. This home blends comfort, light, and functionalityâ€”ready for its next family!

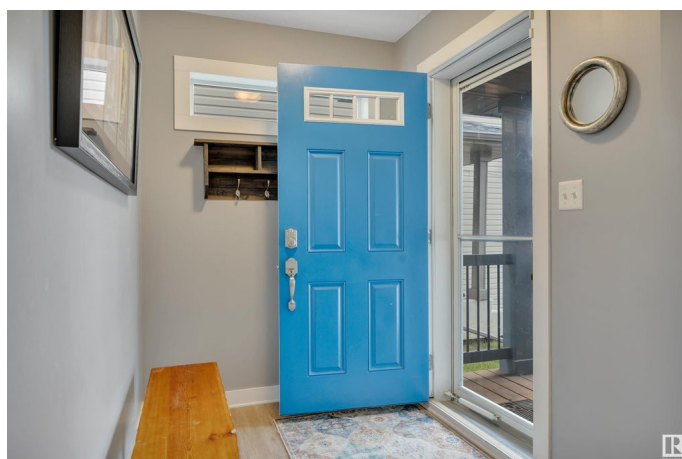
Built in 2007

Essential Information

MLS® # E4437978

Price \$489,900

Bedrooms 4



Bathrooms	3.50
Full Baths	3
Half Baths	1
Square Footage	1,758
Acres	0.00
Year Built	2007
Type	Single Family
Sub-Type	Detached Single Family
Style	2 Storey
Status	Active

Community Information

Address	1031 Westerra Drive
Area	Stony Plain
Subdivision	Westerra
City	Stony Plain
County	ALBERTA
Province	AB
Postal Code	T7Z 2Z5

Amenities

Amenities	Deck, Gazebo, Vaulted Ceiling
Parking	Double Garage Attached

Interior

Interior Features	ensuite bathroom
Appliances	Alarm/Security System, Dryer, Fan-Ceiling, Garage Control, Garage Opener, Microwave Hood Fan, Refrigerator, Storage Shed, Stove-Electric, Vacuum Systems, Washer, Window Coverings, Garage Heater
Heating	Forced Air-1, Natural Gas
Fireplace	Yes
Fireplaces	Tile Surround
Stories	3
Has Basement	Yes
Basement	Full, Finished

Exterior

Exterior	Wood, Vinyl
----------	-------------

Exterior Features	Cul-De-Sac, Fenced, Landscaped, Playground Nearby, Schools, Shopping Nearby
Roof	Asphalt Shingles
Construction	Wood, Vinyl
Foundation	Concrete Perimeter

Additional Information

Date Listed	May 22nd, 2025
Days on Market	11
Zoning	Zone 91

DATA IS DEEMED RELIABLE BUT IS NOT GUARANTEED ACCURATE BY THE REALTORS® ASSOCIATION OF EDMONTON. COPYRIGHT 2025 BY THE REALTORS® ASSOCIATION OF EDMONTON. ALL RIGHTS RESERVED.Trademarks are owned or controlled by the Canadian Real Estate Association (CREA) and identify real estate professionals who are members of CREA (REALTOR®, REALTORS®) and/or the quality of services they provide (MLS®, Multiple Listing Service®)

Listing information last updated on June 2nd, 2025 at 3:47am MDT