

\$375,000 - 6301 20 St, Rural Leduc County

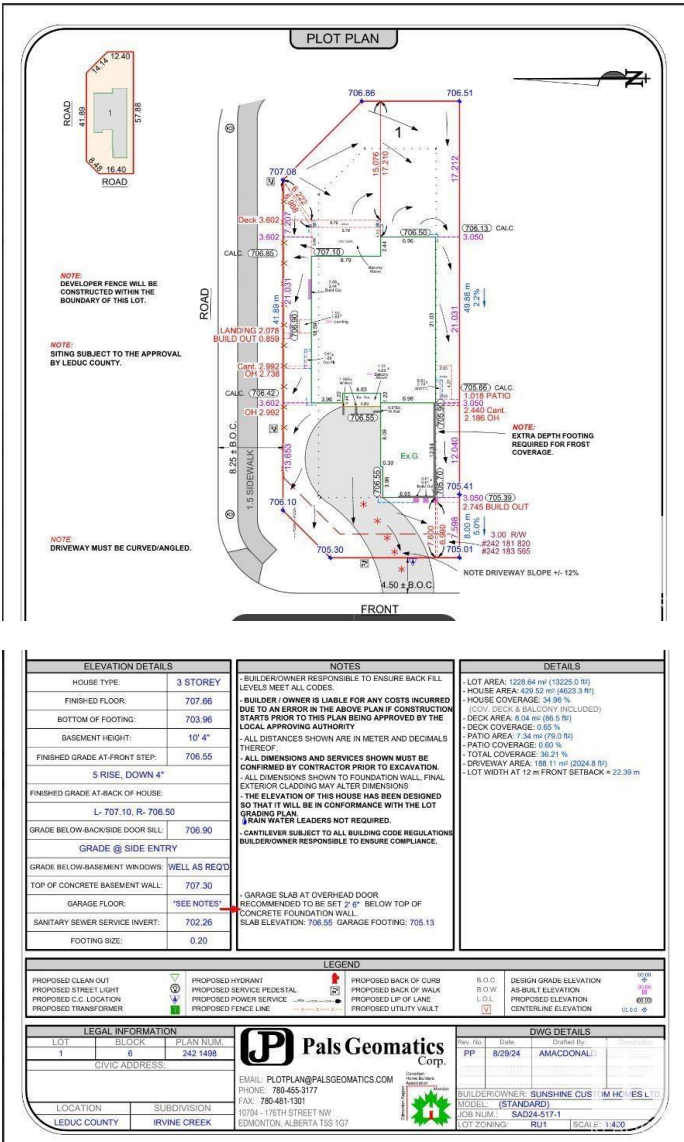
MLS® #E4438875

\$375,000

0 Bedroom, 0.00 Bathroom,
Rural on 0.30 Acres

Irvine Creek, Rural Leduc County, AB

Build your forever home in the sought-after community of Irvine Creek! This exceptional 1,228 sq. m. lot with a 52' pocket offers ample space to design a custom residence tailored to your lifestyle. Ideally located just minutes from South Edmonton, Beaumont, Leduc, and Nisku, this lot provides convenient access to a wide range of amenities, including the Edmonton International Airport, Premium Outlet Collection, South Edmonton Common, shopping, dining, and entertainment. Enjoy nearby walking trails and a beautifully landscaped park – perfect for outdoor enthusiasts and families alike. An excellent opportunity to invest in a growing, well-connected neighborhood.

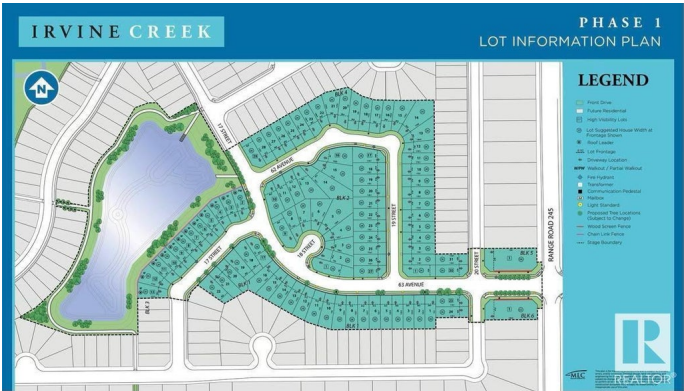


Essential Information

MLS® #	E4438875
Price	\$375,000
Bathrooms	0.00
Acres	0.30
Type	Rural
Sub-Type	Vacant Lot/Land
Status	Active

Community Information

Address	6301 20 St
---------	------------



Area	Rural Leduc County
Subdivision	Irvine Creek
City	Rural Leduc County
County	ALBERTA
Province	AB
Postal Code	T4X 3C9

Exterior

Exterior Features Airport Nearby, Corner Lot, Shopping Nearby

Additional Information

Date Listed	May 28th, 2025
Days on Market	9
Zoning	Zone 80

DATA IS DEEMED RELIABLE BUT IS NOT GUARANTEED ACCURATE BY THE REALTORS® ASSOCIATION OF EDMONTON. COPYRIGHT 2025 BY THE REALTORS® ASSOCIATION OF EDMONTON. ALL RIGHTS RESERVED. Trademarks are owned or controlled by the Canadian Real Estate Association (CREA) and identify real estate professionals who are members of CREA (REALTOR®, REALTORS®) and/or the quality of services they provide (MLS®, Multiple Listing Service®)

Listing information last updated on June 6th, 2025 at 8:32pm MDT