

Courtesy Of Samuel Ireland Of RE/MAX River City

\$489,000 - 4514 163a Avenue, Edmonton

MLS® #E4440231

\$489,000

4 Bedroom, 3.50 Bathroom, 1,726 sqft

Single Family on 0.00 Acres

Brintnell, Edmonton, AB

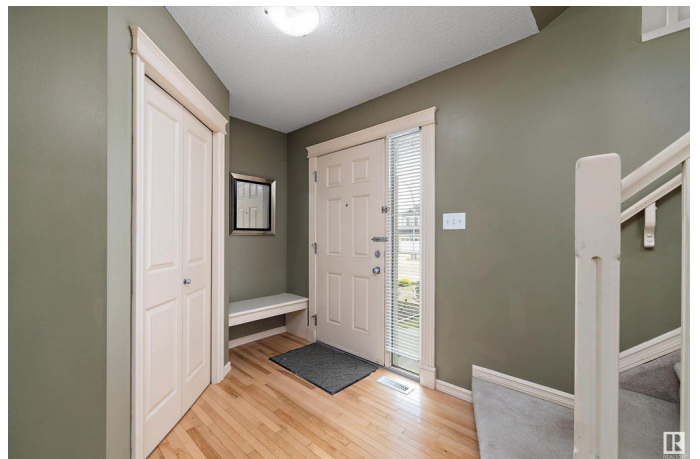
Welcome to this beautifully updated family home in the heart of Brintnell, North Edmonton—perfectly located on a quiet crescent just steps from parks, trails, and the local water park. With quick access to Henday, schools and shopping. Approx 2,700 sq ft of fully finished living space, this 4-bedroom, 3.5-bath has been thoughtfully maintained with recent upgrades including shingles (2023), hot water tank (2022), humidifier (2022), and central A/C (2016). Step inside to a spacious foyer with hardwood floors that flow into the open-concept kitchen featuring granite countertops, a large island, stainless steel appliances, and a walk-in pantry. Patio doors lead to a fully fenced, landscaped backyard with a paving stone patio and shed. The main floor also includes a separate laundry room with brand-new washer and dryer, plus direct access to the double attached garage. Upstairs, you'll find three bedrooms, bonus room with a cozy gas fireplace, and a luxurious primary suite with a soaker and separate shower.

Built in 2006

Essential Information

MLS® # E4440231

Price \$489,000



Bedrooms	4
Bathrooms	3.50
Full Baths	3
Half Baths	1
Square Footage	1,726
Acres	0.00
Year Built	2006
Type	Single Family
Sub-Type	Detached Single Family
Style	2 Storey
Status	Active

Community Information

Address	4514 163a Avenue
Area	Edmonton
Subdivision	Brintnell
City	Edmonton
County	ALBERTA
Province	AB
Postal Code	T5Y 3H7

Amenities

Amenities	See Remarks
Parking Spaces	4
Parking	Double Garage Attached

Interior

Interior Features	ensuite bathroom
Appliances	Air Conditioning-Central, Dishwasher-Built-In, Dryer, Garage Opener, Hood Fan, Humidifier-Power(Furnace), Oven-Microwave, Refrigerator, Washer, Window Coverings
Heating	Forced Air-1, Natural Gas
Stories	3
Has Basement	Yes
Basement	Full, Finished

Exterior

Exterior	Wood, Brick, Vinyl
Exterior Features	See Remarks

Roof	Asphalt Shingles
Construction	Wood, Brick, Vinyl
Foundation	Concrete Perimeter

Additional Information

Date Listed	June 4th, 2025
Days on Market	2
Zoning	Zone 03

DATA IS DEEMED RELIABLE BUT IS NOT GUARANTEED ACCURATE BY THE REALTORS® ASSOCIATION OF EDMONTON. COPYRIGHT 2025 BY THE REALTORS® ASSOCIATION OF EDMONTON. ALL RIGHTS RESERVED.Trademarks are owned or controlled by the Canadian Real Estate Association (CREA) and identify real estate professionals who are members of CREA (REALTOR®, REALTORS®) and/or the quality of services they provide (MLS®, Multiple Listing Service®)

Listing information last updated on June 6th, 2025 at 8:32pm MDT