

\$420,000 - 12247 Dovercourt Crescent, Edmonton

MLS® #E4443960

\$420,000

4 Bedroom, 2.00 Bathroom, 1,147 sqft

Single Family on 0.00 Acres

Dovercourt, Edmonton, AB

Across from the park. 3 bedroom 1146 sq feet bungalow on a quiet street in Dovercourt.

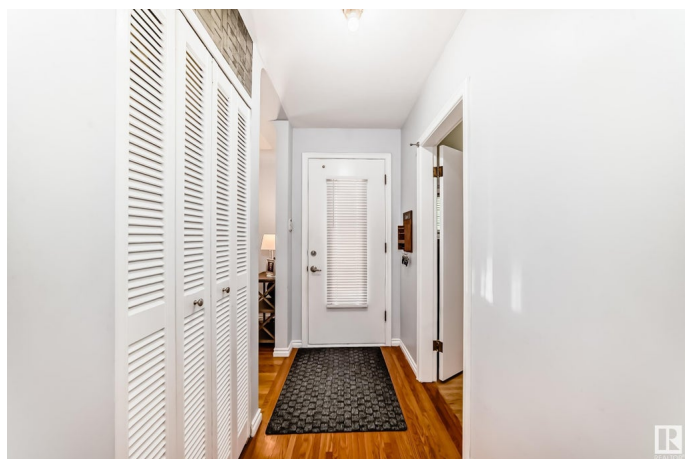
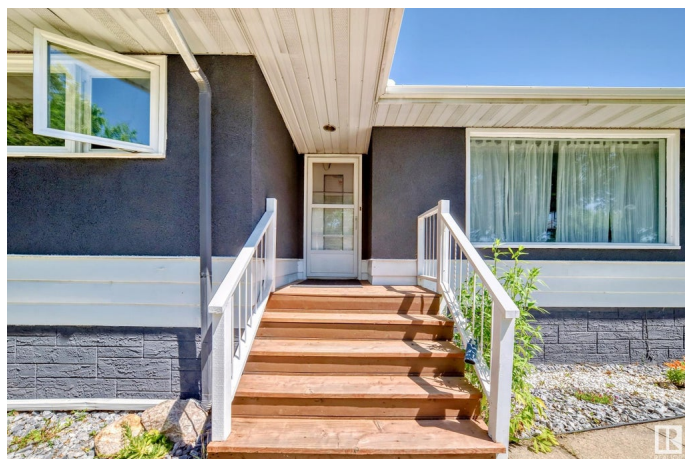
Hardwood floors throughout the main floor, 1/2 bath off the master bedroom, entertaining-size living and dining room. Basement features family room, hobby room, one-bedroom, 3pce bathroom, kitchen and laundry room. Double garage off the alley. Newer roof and newer hot water tank. Home is in great location across from a park and close to all amenities.

Built in 1955

Essential Information

| | |
|----------------|------------------------|
| MLS® # | E4443960 |
| Price | \$420,000 |
| Bedrooms | 4 |
| Bathrooms | 2.00 |
| Full Baths | 1 |
| Half Baths | 2 |
| Square Footage | 1,147 |
| Acres | 0.00 |
| Year Built | 1955 |
| Type | Single Family |
| Sub-Type | Detached Single Family |
| Style | Bungalow |
| Status | Active |

Community Information



| | |
|-------------|---------------------------|
| Address | 12247 Dovercourt Crescent |
| Area | Edmonton |
| Subdivision | Dovercourt |
| City | Edmonton |
| County | ALBERTA |
| Province | AB |
| Postal Code | T5L 4E4 |

Amenities

| | |
|-----------|-----------------------------------------------------------------|
| Amenities | Detectors Smoke, Exercise Room, No Animal Home, No Smoking Home |
| Parking | Double Garage Detached |

Interior

| | |
|-------------------|----------------------------------------------------------------------------------|
| Interior Features | ensuite bathroom |
| Appliances | Dishwasher-Built-In, Dryer, Garage Control, Refrigerator, Stove-Electric, Washer |
| Heating | Forced Air-1, Natural Gas |
| Stories | 2 |
| Has Basement | Yes |
| Basement | Full, Finished |

Exterior

| | |
|-------------------|---------------------------------------------|
| Exterior | Wood, Stucco |
| Exterior Features | Back Lane, Fenced, Landscaped, Park/Reserve |
| Roof | Asphalt Shingles |
| Construction | Wood, Stucco |
| Foundation | Concrete Perimeter |

Additional Information

| | |
|----------------|-----------------|
| Date Listed | June 23rd, 2025 |
| Days on Market | 24 |
| Zoning | Zone 04 |

DATA IS DEEMED RELIABLE BUT IS NOT GUARANTEED ACCURATE BY THE REALTORS® ASSOCIATION OF EDMONTON. COPYRIGHT 2025 BY THE REALTORS® ASSOCIATION OF EDMONTON. ALL RIGHTS RESERVED. Trademarks are owned or controlled by the Canadian Real Estate Association (CREA) and identify real estate professionals who are members of CREA (REALTOR®, REALTORS®) and/or the quality of services they provide (MLS®, Multiple Listing Service®)

Listing information last updated on July 17th, 2025 at 7:32am MDT